



Better health programme

Welcome

Public Engagement events

February 2017

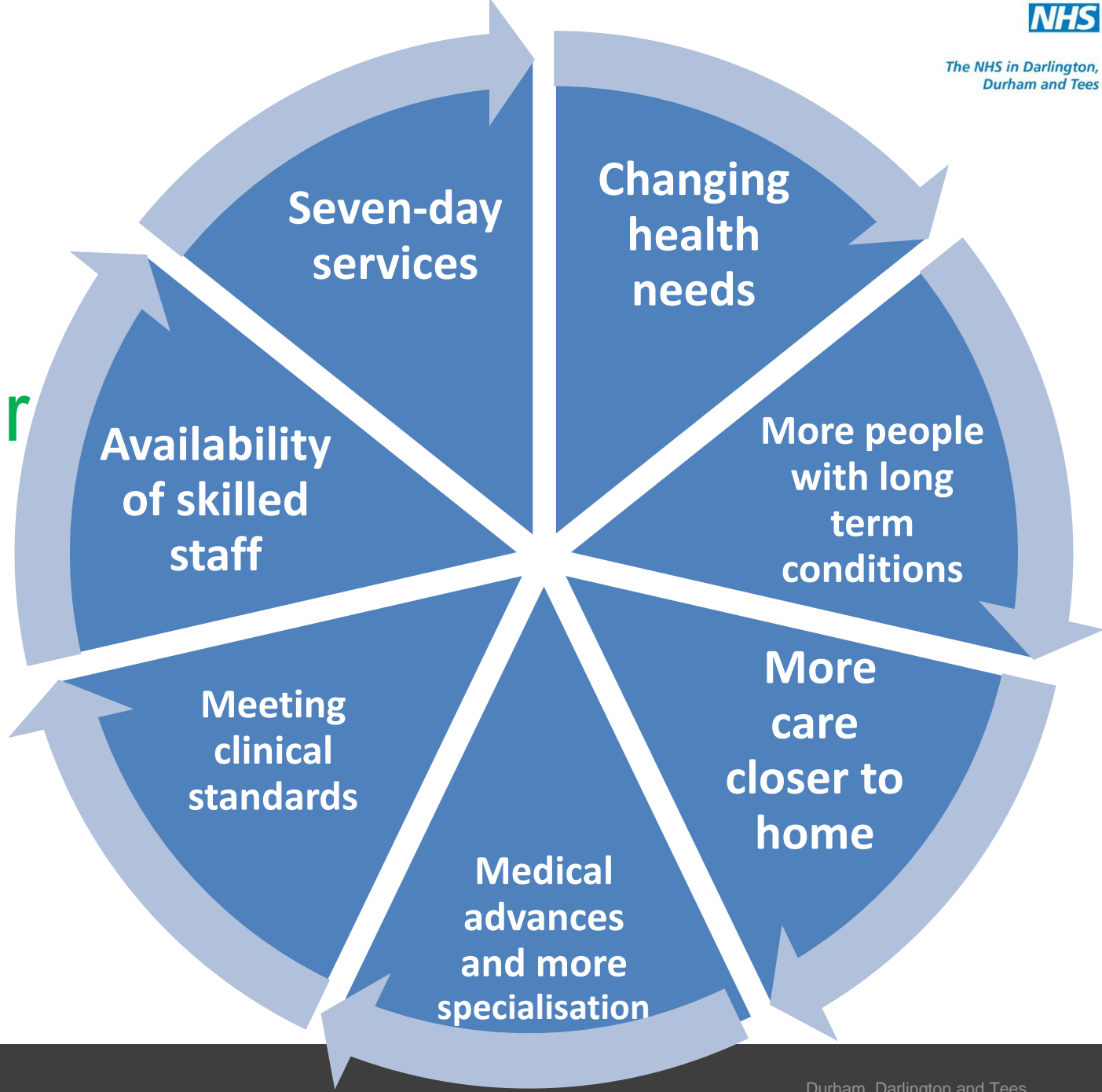


Better health programme

The Better Health Programme has been created to bring NHS organisations together to create Darlington, Durham and Tees wide solutions to challenges that individual organisations have been trying to tackle on their own.

The Better Health Programme is now part of the Sustainability and Transformation Plan for Tees Valley, Durham Dales Easington and Sedgefield and Hambleton, Richmondshire and Whitby.

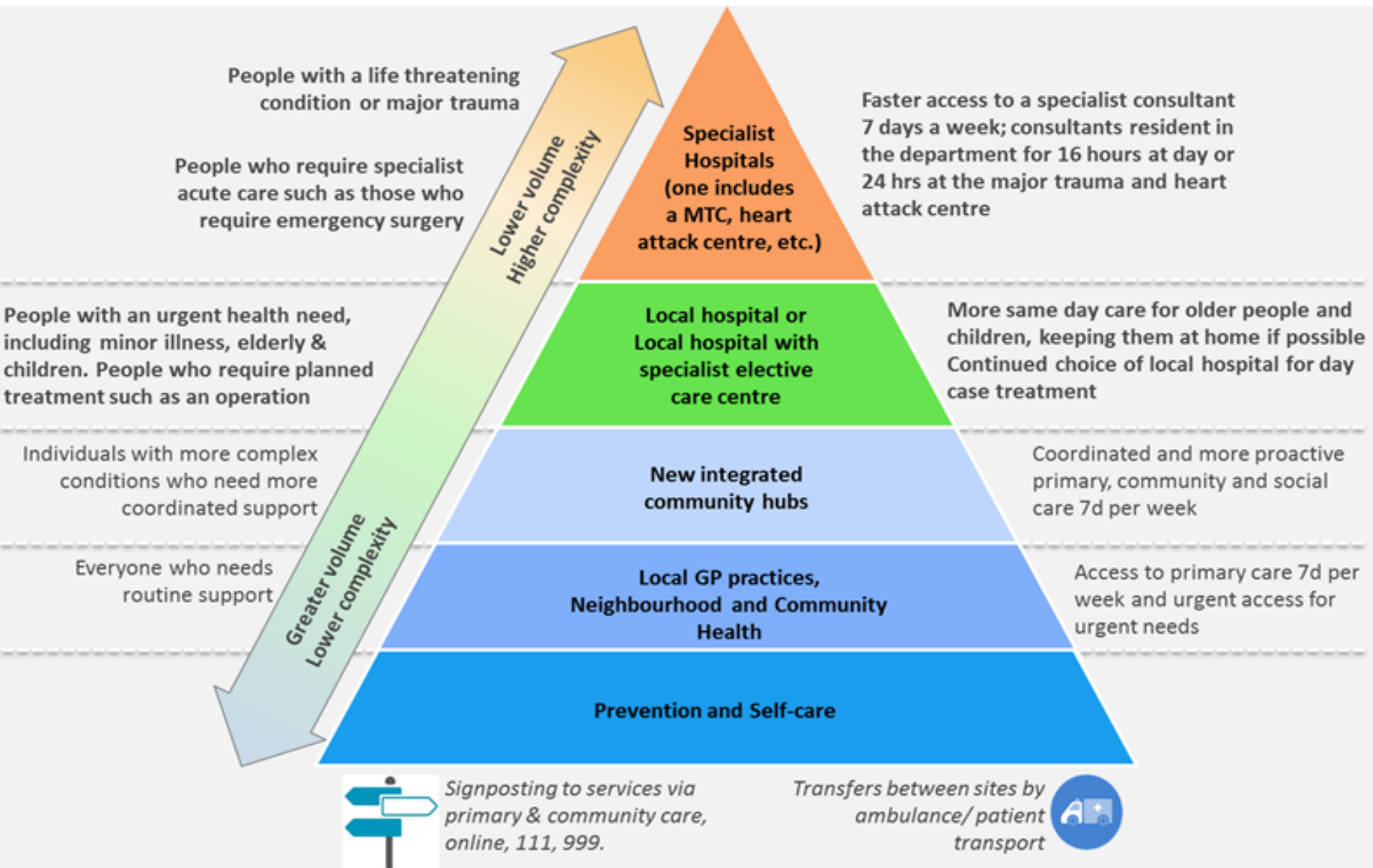
Drivers for Change



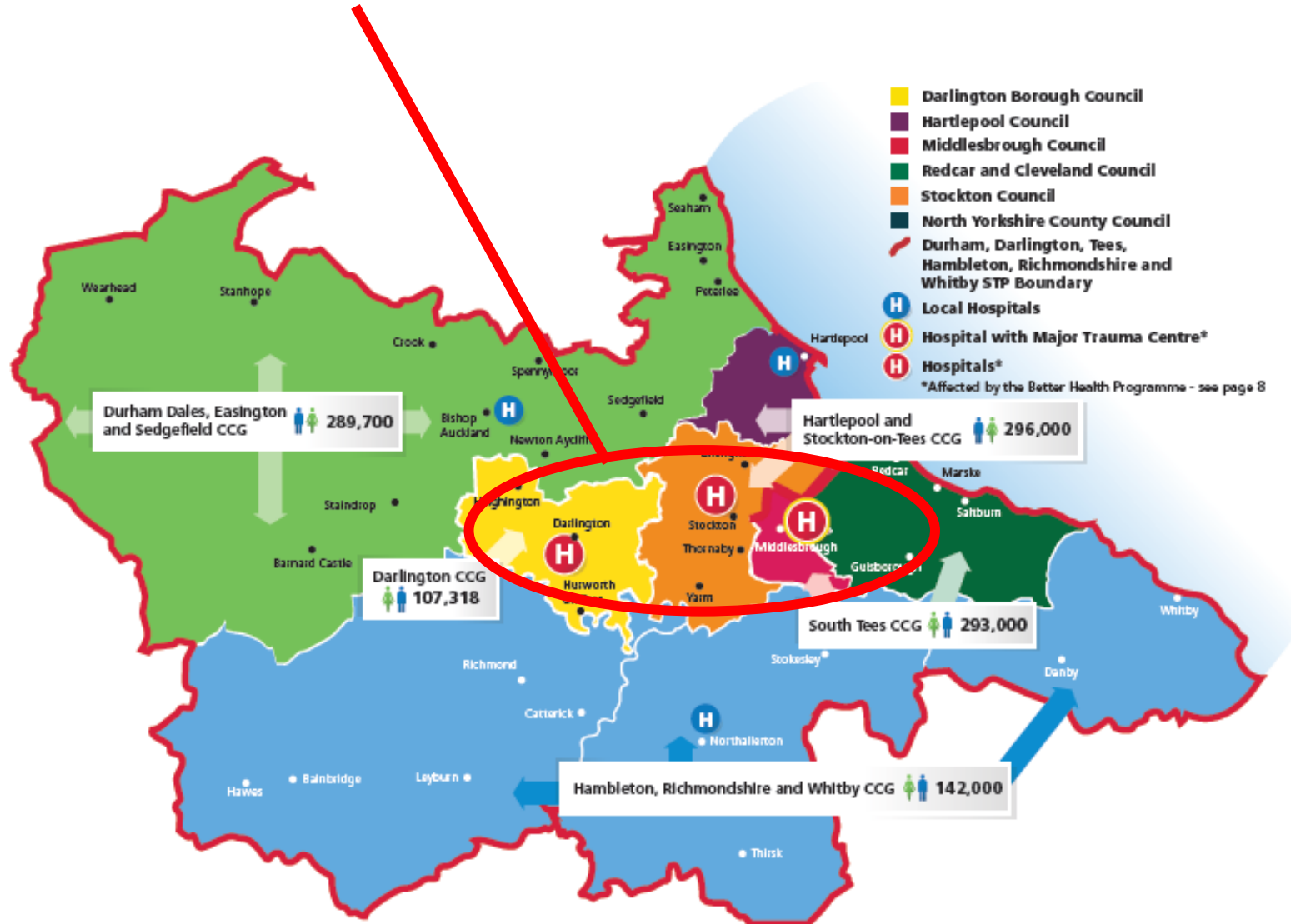
Sustainability and Transformation Plan priorities

- Preventing ill health and increasing self care
- Health and care in communities and neighbourhoods
- **Better Health Programme** - quality of care in our hospitals
- Use of technology in health care.

Model of care



Our clinicians believe we should provide specialist emergency care, consultant led deliveries and inpatient paediatrics from fewer sites to improve care





Please [click here](#) to watch our phase five video.

Issues for maternity, paediatrics (children) and neonatal

- Increasing specialisation leading to better care for
 - More mums to be with risk factors
 - More premature babies, born earlier needing care for longer – independent report has recommended centralisation
 - Children with long term conditions
- Specialisation and staffing pressures means we need to change how we provide care

We need your help

“You said” - engagement so far

Top 3 decision making priorities

- Quality of care, and results for patients
- The right staffing
- Travel and transport to hospital
- Access to primary care
- Access to mental health services
- Communication
- Discharge support
- Integration of services

Maternity care

- What is important to you about the maternity care you and your family receives?
- How we can make it better?
- What influences your choice about where you would have your baby?

Maternity services

- Community based ante-natal and post-natal care
- Home birth – midwife-led (low risk)
- Standalone midwife–led unit (low risk)
- Alongside midwife–led unit (low risk)
- Consultant led unit (low and high risk)

“Every woman should develop a personalised care plan, with their midwife and other health professionals, which sets out her decision about her care reflecting her wider health needs.”

Cumberlege Report

Maternity care

- What is important to you about the maternity care you and your family receives?
- How we can make it better?
- What influences your choice about where you would have your baby?

Feedback

Paediatric (children's) care

- What is important to you about the care your child receives?
- How we can make it better?

Emergency paediatrics (children)

- Paediatric day assessment units
 - An assessment and observation ward for children who are unwell with less severe episodes of illness
- Inpatient beds
 - For children who are seriously unwell admitted in an emergency, sometimes as a result of a long term condition

Paediatric (children's) care

- What is important to you about the care your child receives?
- How we can make it better?

Feedback

Thank you!

We will share your feedback with the clinical staff who are shaping the future of services.

You can also share views with us via:

- **Email:** necsu.betterhealthprogramme@nhs.net
- **Twitter:** www.twitter.com/NHSBetterHealth
- **Facebook:** www.facebook.com/nhsbetterhealthprogramme

For more information about the Better Health Programme:

www.nhsbetterhealth.org.uk

TABLE MATERIALS

Home Birth

- Midwife led care
- Can hire birthing pool
- Limited pain relief available, e.g. gas and air
- Transferred by ambulance to consultant-led unit if your midwife has concerns about you or your baby.

Standalone midwifery-led unit

Midwife leads care

Some have a birthing pool

Limited pain relief available, e.g. gas and air

No doctors available on site

Transferred by ambulance to consultant-led unit
if your midwife has concerns about you or your
baby.

Alongside midwifery-led unit

Midwife leads care

Some have a birthing pool

Limited pain relief available, e.g. gas and air

Situated next to or on the same hospital site as a consultant-led unit

Transferred to consultant-led unit on site if your midwife has concerns about you or your baby.

Consultant-led unit

- Midwife leads care with consultants also available
- Birthing pool available
- Full range of pain relief available, e.g. epidural
- Doctors and specialist consultant on-hand in the same building should complication occur, e.g. emergency caesarean, baby needs special care

Community hub

- Ante and post natal clinics
- Ultrasound tests
- Smoking cessation
- Voluntary sector support
- Quick referral to the right expert

“Every woman...

“...should develop a **personalised care plan**, with their midwife and other health professionals, which sets out her decision about her care **reflecting her wider health needs**”

“...should have a midwife, who is **part of a small team** of 4 to 6 midwives, based in the community who knows the women and family, and can provide **continuity throughout the pregnancy, birth and postnatally**”

“**Community hubs** should enable women and families to access care **close to home, in the community** from their midwife and from a range of other services, particularly for antenatal and postnatal care.”

PERSONALISED CARE

BETTER POSTNATAL AND PERINATAL MENTAL HEALTHCARE

SAFER CARE

with professionals working together across boundaries and leadership for a safety culture

National Maternity review

Cumberlege Report

MULTI-PROFESSIONAL WORKING

CONTINUITY OF CARER

PAYMENT SYSTEM

WORKING ACROSS BOUNDARIES

Paediatrics (children)

- Paediatric day assessment units
 - An assessment and observation ward for children who are unwell with less severe episodes of illness
- Inpatient beds
 - For children who are seriously unwell admitted in an emergency, sometimes as a result of a long term condition

Maternity and paediatrics (children's services) engagement

- 10 public engagement events
- 50 discussions with community based groups
- Research/survey of 1000 women