



Better health programme

Welcome

Engagement events

July/August 2016

Welcome

- Introduction
- Purpose of the evening
- Better Health programme: video – the story so far
- Workshop
- Feedback

Better Health Programme

**PCT led Acute services
legacy project**
2012 - 13

**Securing Quality in
Hospital Services
(SeQIHS)**
2013 - 15

**Better Health
Programme**
2016 - 20

- A programme of clinically led work that considers the future of health services in Darlington, Durham and Tees
- Led by CCGs, supported by Foundation Trusts
- Working with local authorities, stakeholders and patient representatives



Better health programme

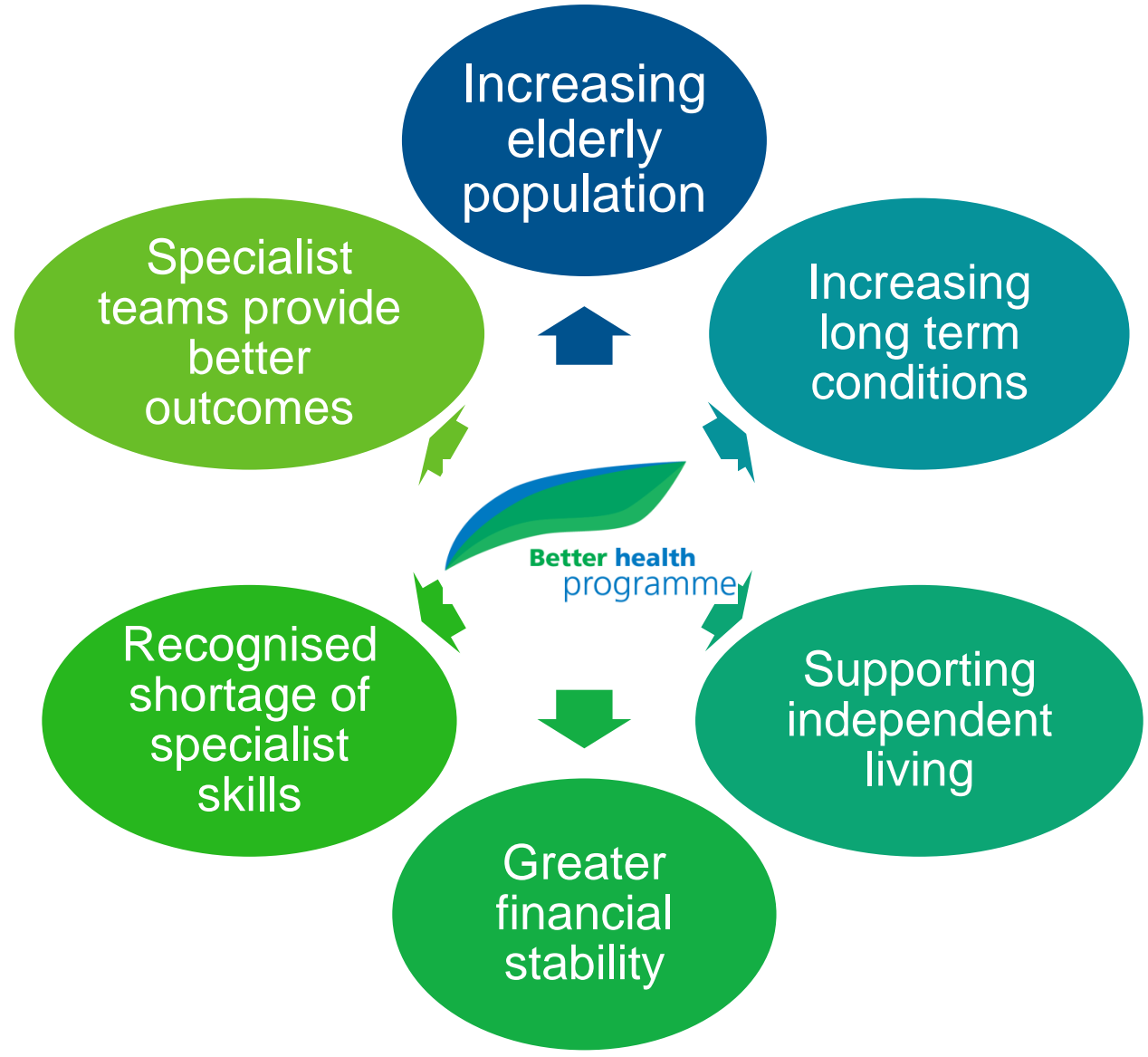
“The Better Health Programme has been created to bring NHS organisations together to create Darlington, Durham and Tees wide solutions to challenges that individual organisations have been trying to tackle on their own.”

Dr Neil O’Brien, Clinical Lead



Better health programme

Our vision: “Meeting patient needs now and future proofing for the coming generation with consistently better health and social care delivered in the best place and within available resources.”



Purpose of the event

- Today is part of a series of engagement events to listen to views about the future of services
- Engagement will continue over the next few months
- There will be a formal consultation in the Autumn
- **No decisions have been made about changes to where care should be provided in the future.**



Click here to play the video: <https://www.youtube.com/watch?v=EJcCrtylwK0>

Workshop

We need your help on how we identify possible solutions to the challenges we face.

Format...

- Round table discussions
- Led by a facilitator, recorded by a note taker
- Looking forward not backward
- Everyone's view is equally valid
- Keeping to time

Finding possible solutions...

The programme is reaching an important stage, with work beginning to develop and assess possible solutions.

Finding possible solutions...

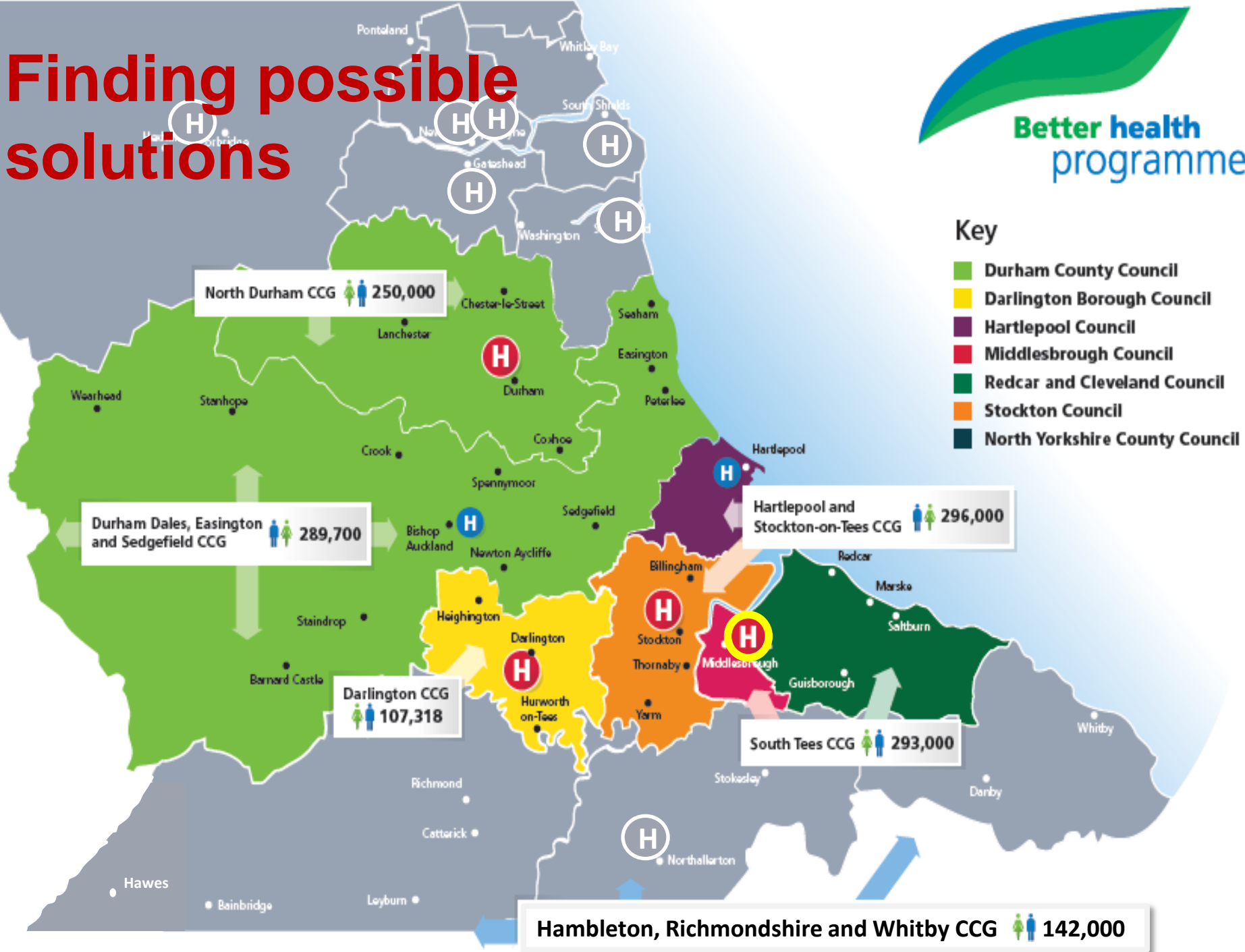
The view of the clinical leadership of the programme is that if we want to have the right staff available to meet patients' needs 24/7, we need to consider whether specialist emergency care for adults and children should be provided from fewer sites.

Examples where patients benefit from specialist emergency care include treatment for very serious injury, heart attack, stroke, internal bleeding and other life threatening situations.

Finding possible solutions...

We will be looking seriously at the case for each of the four hospitals in Darlington, Durham and Tees which currently provide A&E being one of up to three emergency centres offering an enhanced level of care in the future.

Finding possible solutions



Finding possible solutions...

Which solutions could...

1. achieve more of the **700 quality standards**?
2. **improve results for patients**, eg. survival from illnesses, reduce complications?
3. **improve staffing**, recruitment and retention, reduce locums?
4. minimise **impact on access** by car, public transport or ambulance?
5. **reduce waits and delays**, eg. A&E, discharge?
6. be within **existing resources** and facilities?
7. **support research** to improve care?

Workshop discussion

- What do you think about these questions?
- Are there any others you would ask and why?
- How would you rank them in importance?

Next steps...

- We will share your feedback with the Programme Team
- We will use it to shape our list of solutions and our decision making criteria
- We would like to meet you again to discuss these issues further

Timeline

Next steps



More information

For more information about the Better Health Programme:
www.nhsbetterhealth.org.uk

- Email: necsu.betterhealthprogramme@nhs.net
- Twitter: www.twitter.com/NHSBetterHealth
- Facebook: [/nhsbetterhealthprogramme](https://www.facebook.com/nhsbetterhealthprogramme)



Better health
programme

Thank you!

A large, solid green curved shape that starts from the bottom right and curves upwards and to the left, filling the bottom right corner of the page.